



# How to: Motor Polarity Check/Change

Starbucks Barista (Baratza Version), Maestro, Maestro Plus, Virtuoso, Preciso, Encore, Virtuoso+

Time: 10 min

Difficulty: Easy

Tools/supplies: Flat head screwdriver. T10 Driver. Phillips Driver.

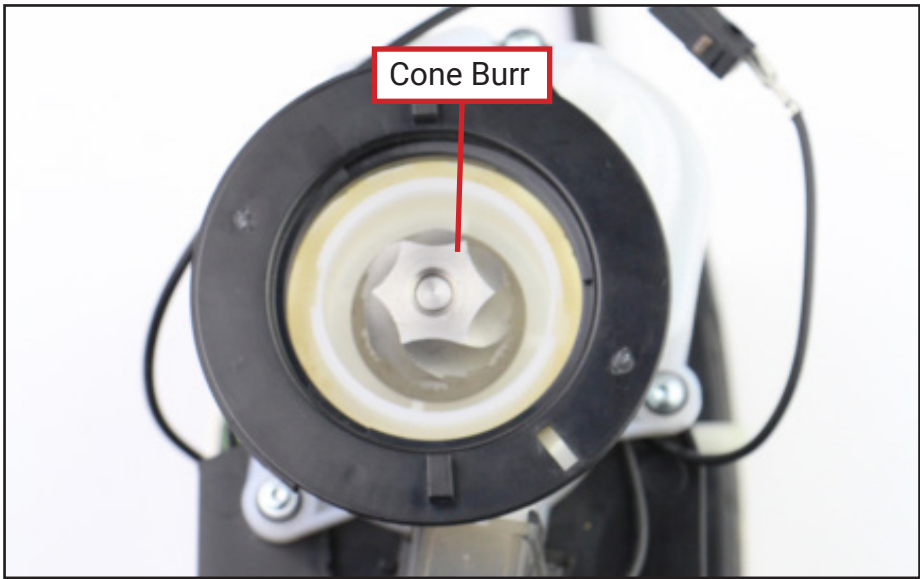
Parts: n/a

Additional Resources: Case Removal. Motor Replacement.

**\*\*\* Unplug the grinder from power supply \*\*\***

Remove the case using our case removal guide.

To check motor polarity, observe the cone burr spinning under power.



CORRECT POLARITY

REVERSE POLARITY

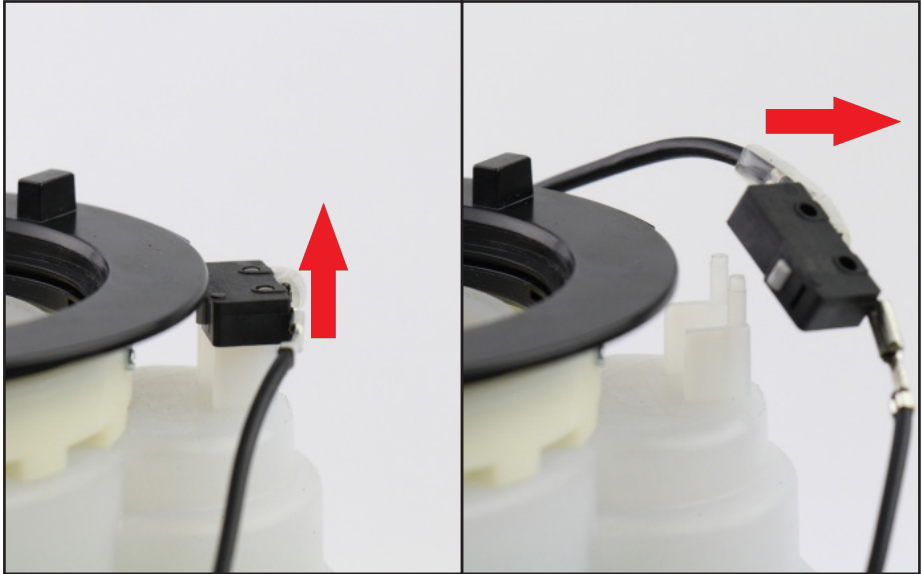


Cone Burr Spins Clockwise

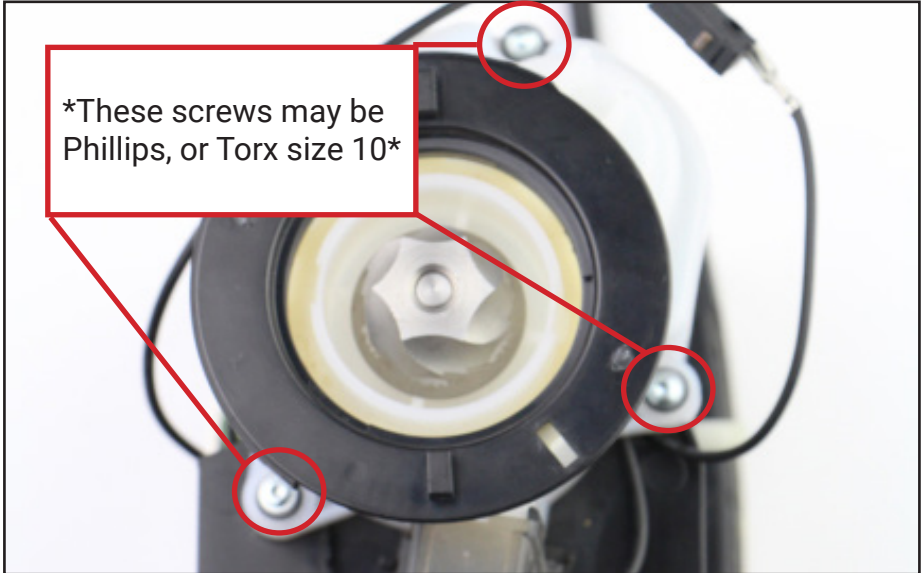
Cone Burr Spins Counter-Clockwise



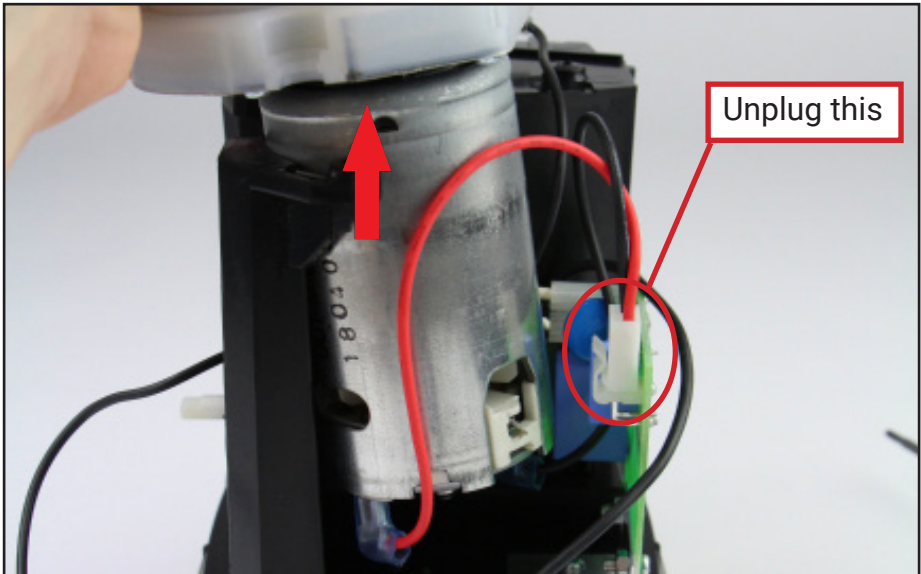
Lift the safety interlock switch off its posts.



Remove the 3 screws securing the gearbox/motor assembly to the chassis.



Unplug the motor and lift the gearbox/motor assembly from the chassis.

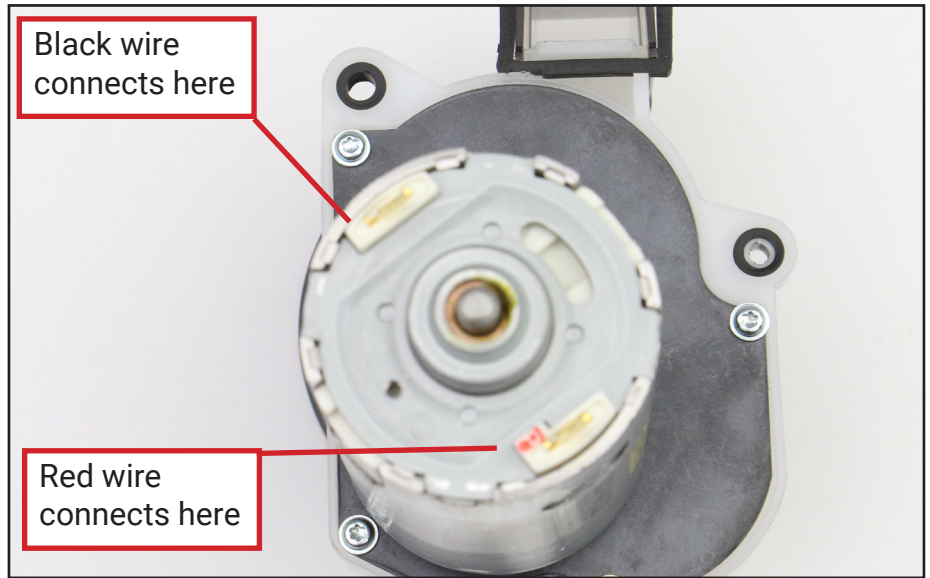




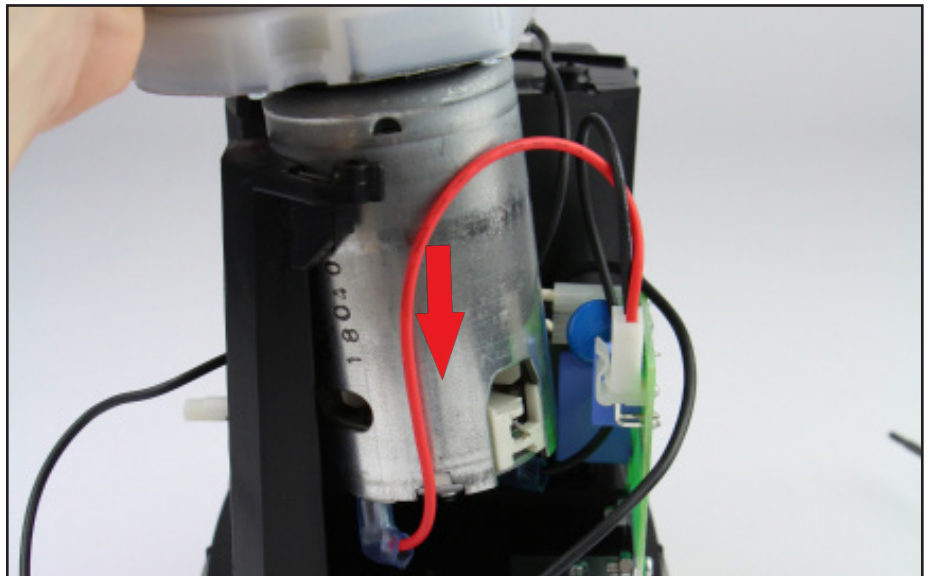
Remove the spade clips from the bottom of the motor and re-install them – ensuring that the red wire secures to the terminal with the red marking/excess white material.

Black wire connects here

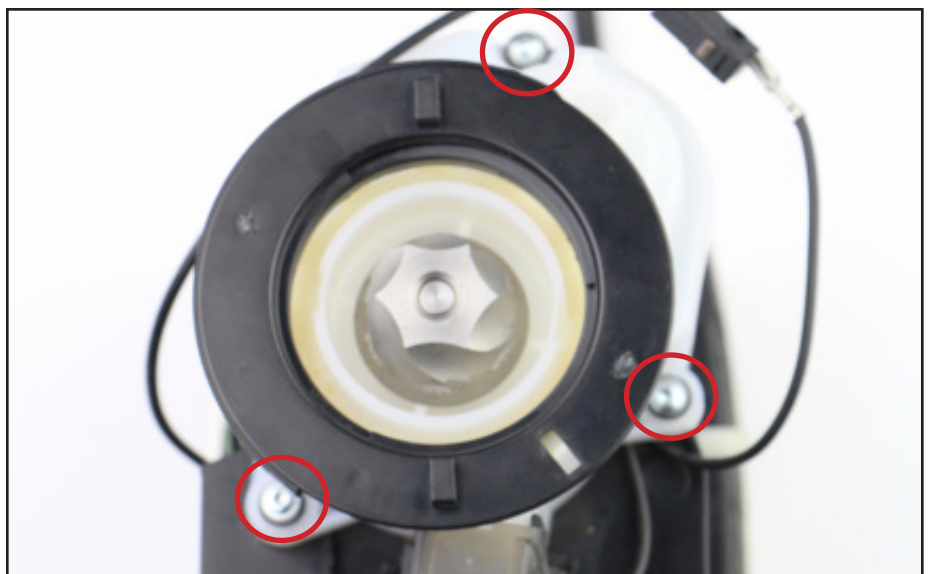
Red wire connects here



Set the gearbox housing/motor assembly back into the chassis. Plug in the motor

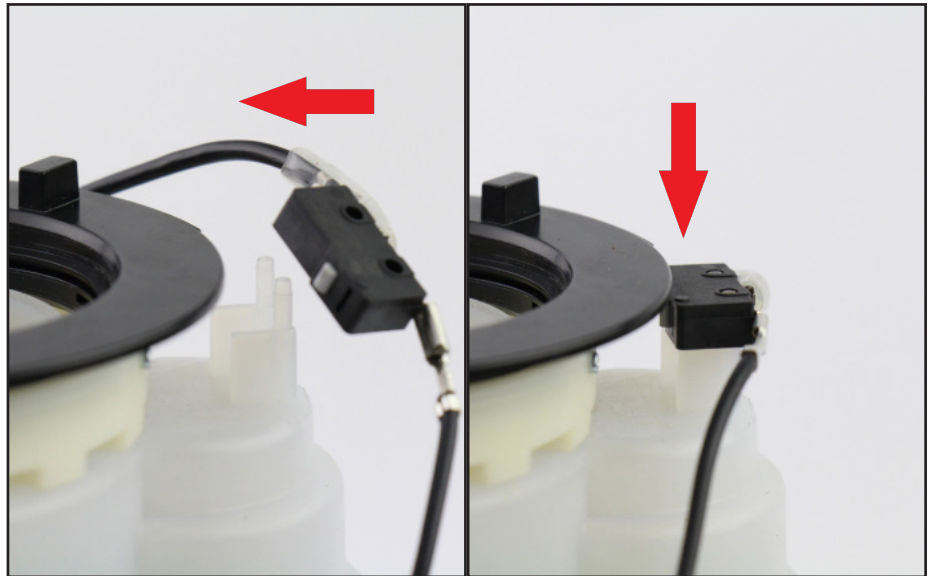


Secure the three screws which mount the parts together.





Return the safety interlock switch to its posts, ensuring that the actuator faces inward.



Re-install the case and return the unit to operation.



If you have any questions or encounter issues with this guide, contact [support@baratza.com](mailto:support@baratza.com)