

Vario W EEE Error Resolution

Tools needed- Phillips screwdriver, jumper wire

Unplug the machine and remove the hopper and grounds bin.

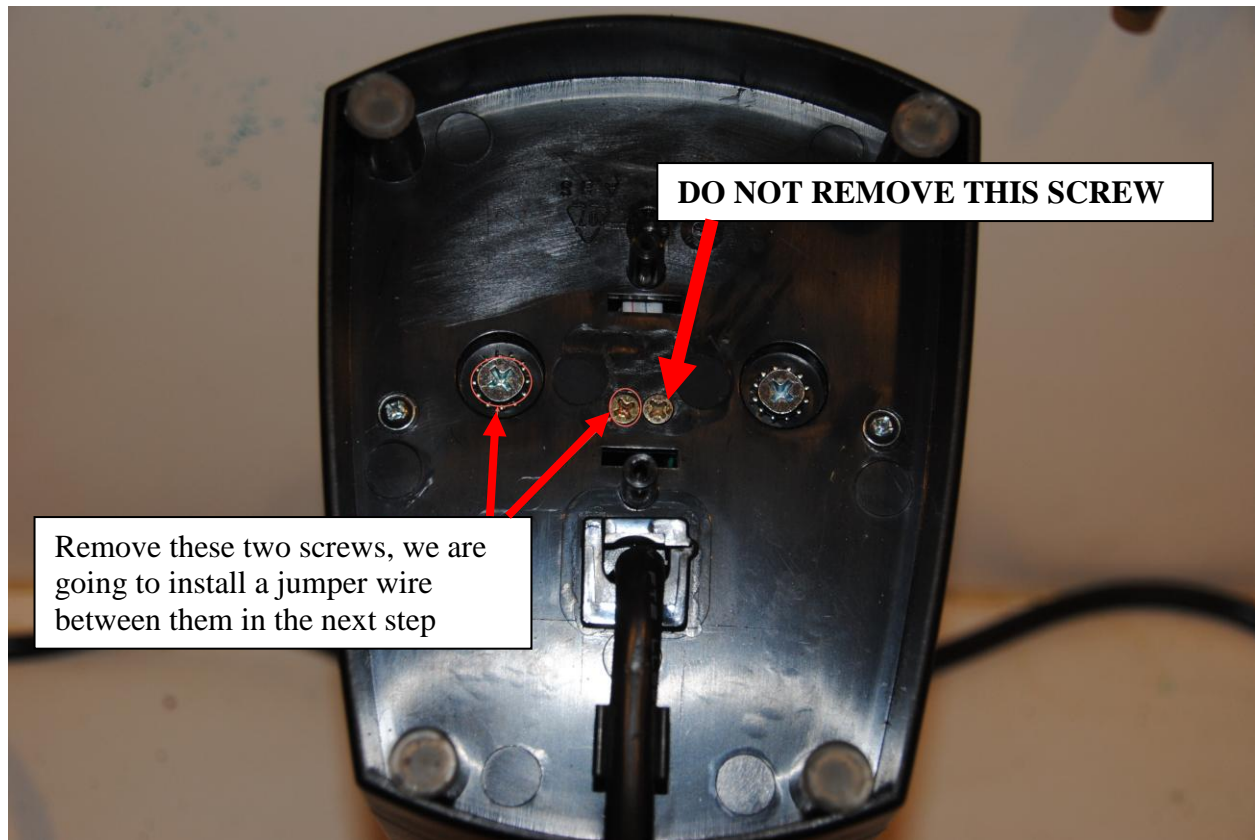
Raise both grind adjustment levers to the finest position (all the way up).

Turn the grinder upside down and look at the bottom of the grinder. The "cord cover" is the plastic part with the silver name plate on it. Remove the two philips screws that hold the cover on and lift off the cover.



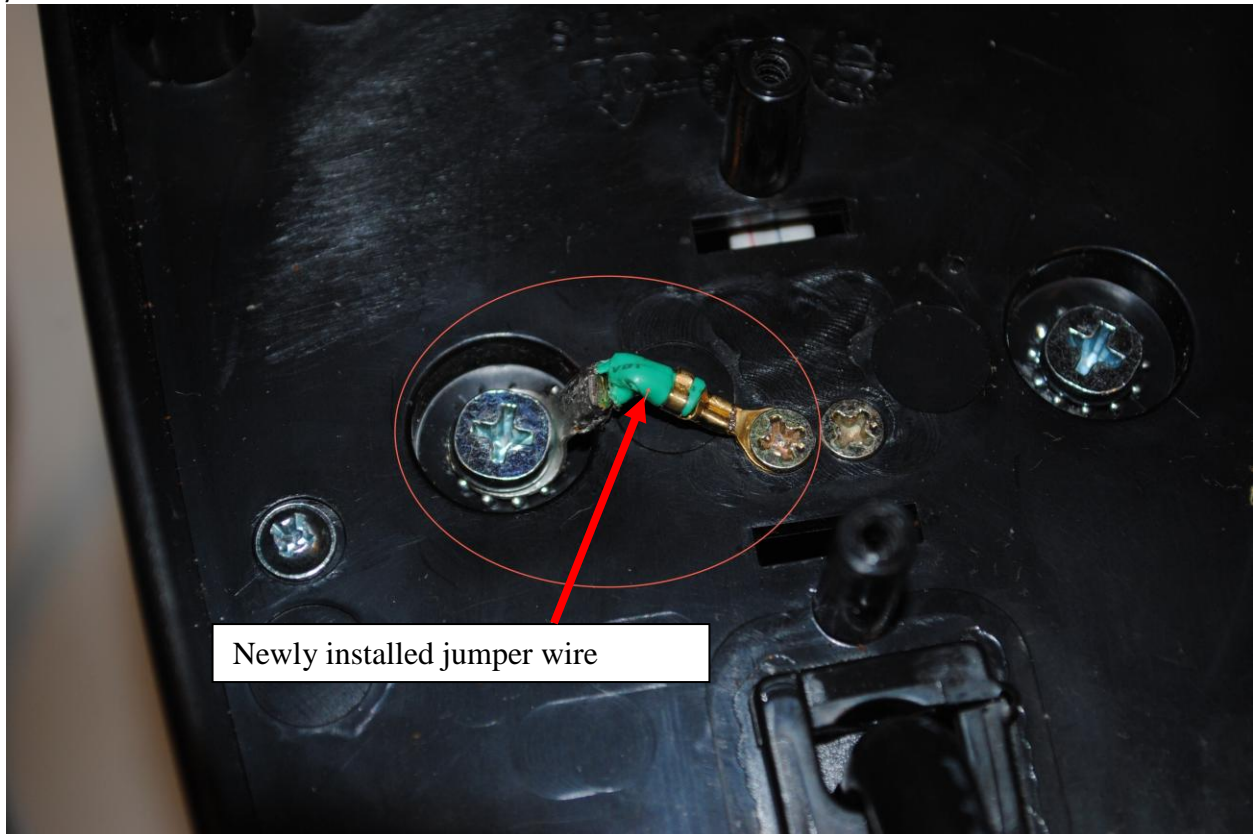
CONTINUED BELOW

You can now see two SMALL Phillips screws (gold colored) centered under where the cover was. Remove the left screw. To the left of this screw is a LARGE silver Phillips screw with a "star washer" under the head. Remove this screw.



CONTINUED BELOW

We will create a jumper wire (about 0.5 inch long) with an eyelet for the big screw and one for the small screw. Reinstall the screws with the eyelets and wire connecting them. The small screw is a mounting screw for the load cell (scale) and the large screw is a mounting screw for the metal base (which is connected directly to the ground wire in the AC plug) . This provides a solid ground for the load cell so any static electricity is driven to ground not into the circuitry. All of our testing has shown this solution to work flawlessly. If you have any repeat of these issues after grounding, we would REALLY appreciate hearing from you.



If you want to wait for us to send you a ground wire, please contact support@baratza.com