

## How To Unclog a Barista, Maestro, Maestro Plus, Virtuoso, or Preciso

### Tools Needed:

A jumbo paperclip and skewer/chopstick/pen/poker of some sort

Before you start- Unplug your grinder!

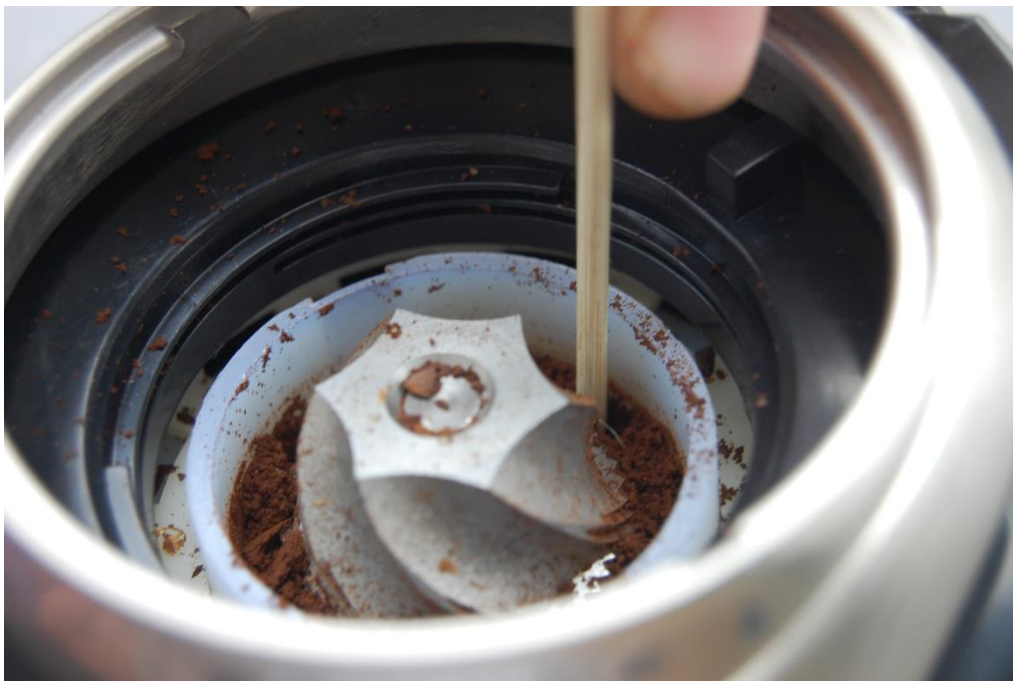
Remove the hopper by rotating it counterclockwise until it lifts out

Remove the silicone seal

Remove the upper ring burr by lifting it out by the red and white tabs on top

Remove the grounds bin

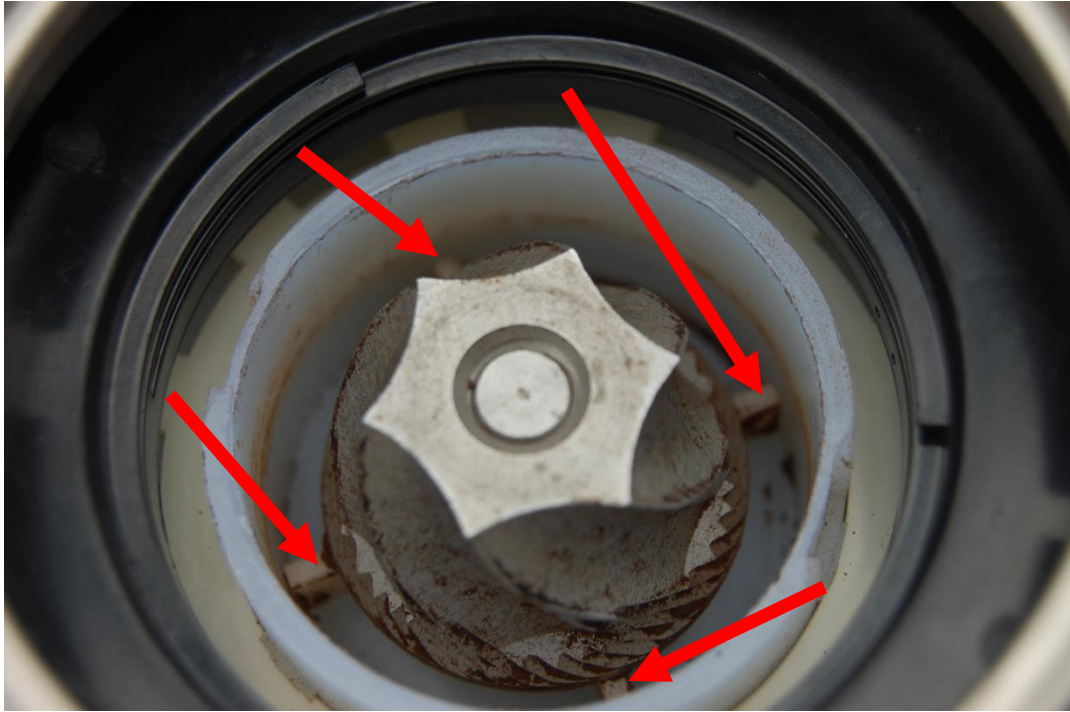
At this point, your grinding chamber probably has a lot of coffee powder in it. Use the poker to break up the impacted coffee. Compressed air works well for this step.



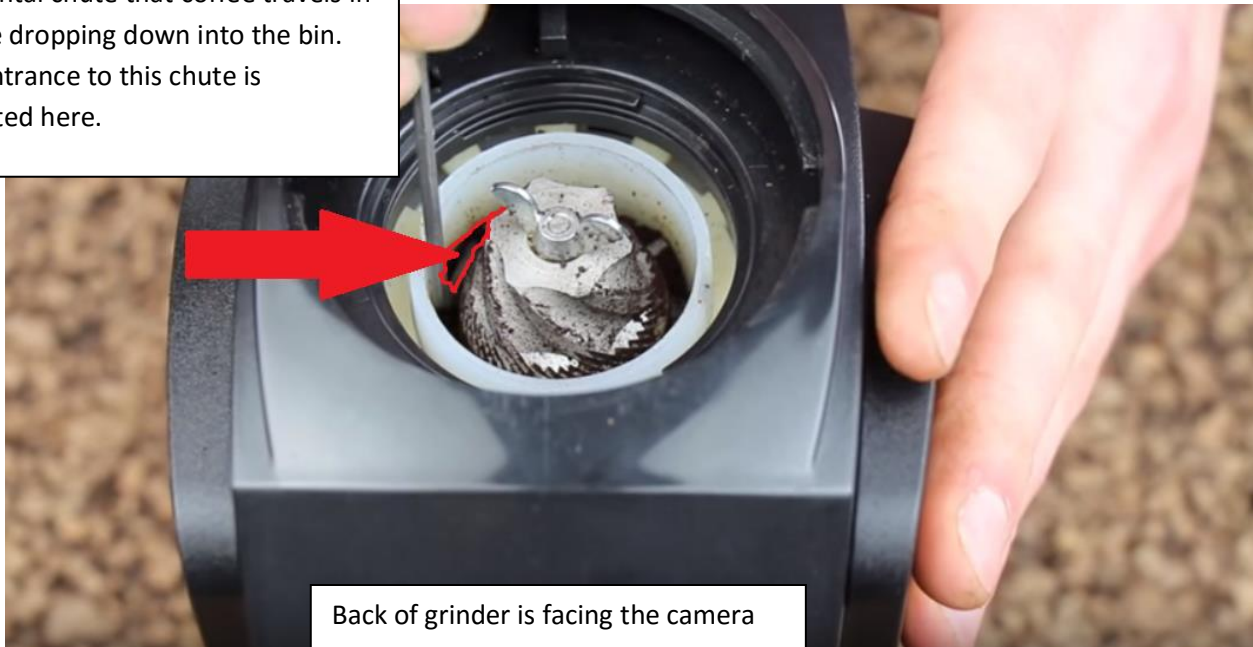
Periodically flip the grinder upside down to empty the powder. Tapping the grinder on its side helps as well (see below)



The top should be as clean as the picture below, where you can see all the paddlewheels (4 or 8 depending on age). The grinder pictured is a 4 paddle wheel unit.



The goal of unclogging is to clear the horizontal chute that coffee travels in before dropping down into the bin. The entrance to this chute is indicated here.



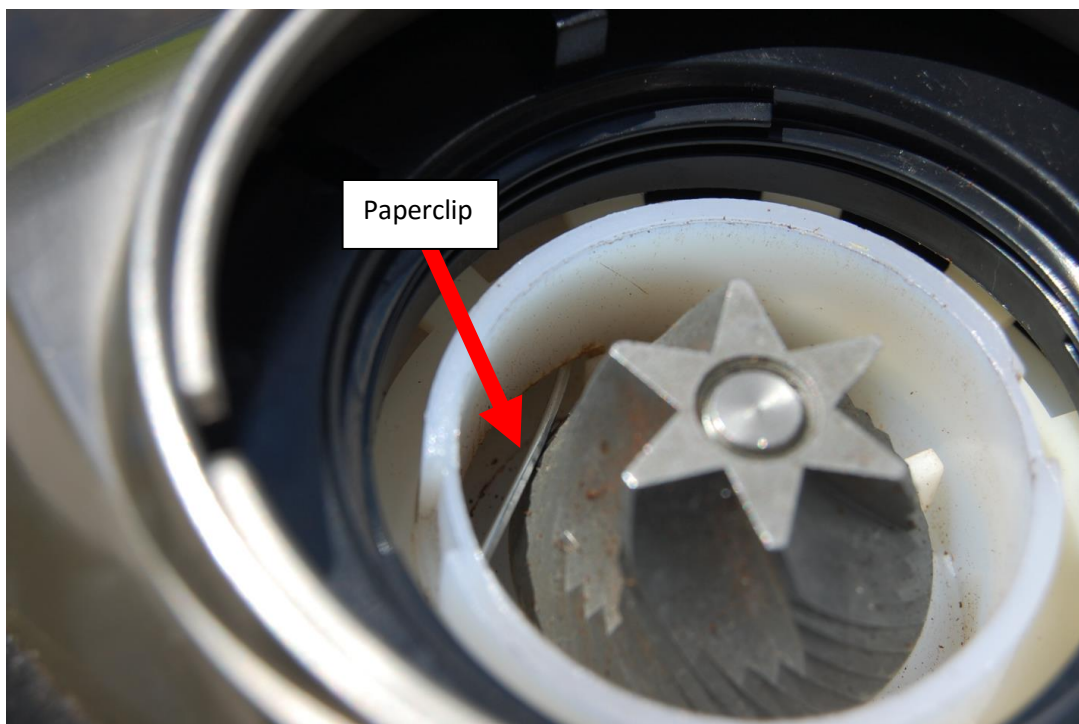
Flip the grinder upside down and proceed to clear out the bottom side of the chute. Bend the paperclip in a fashion similar to what is pictured so that you can go around the bend in the chute and proceed to clear the entire chute.



Make sure to tap the grinder periodically to discharge the powder



You know the chute is cleared when you can stick the paperclip in from the bottom side and see it coming out of the top side of the chute (see below)



After wiggling the paperclip fervently and dislodging all the coffee, re assemble and run a handful of beans through at the coarsest setting (40).