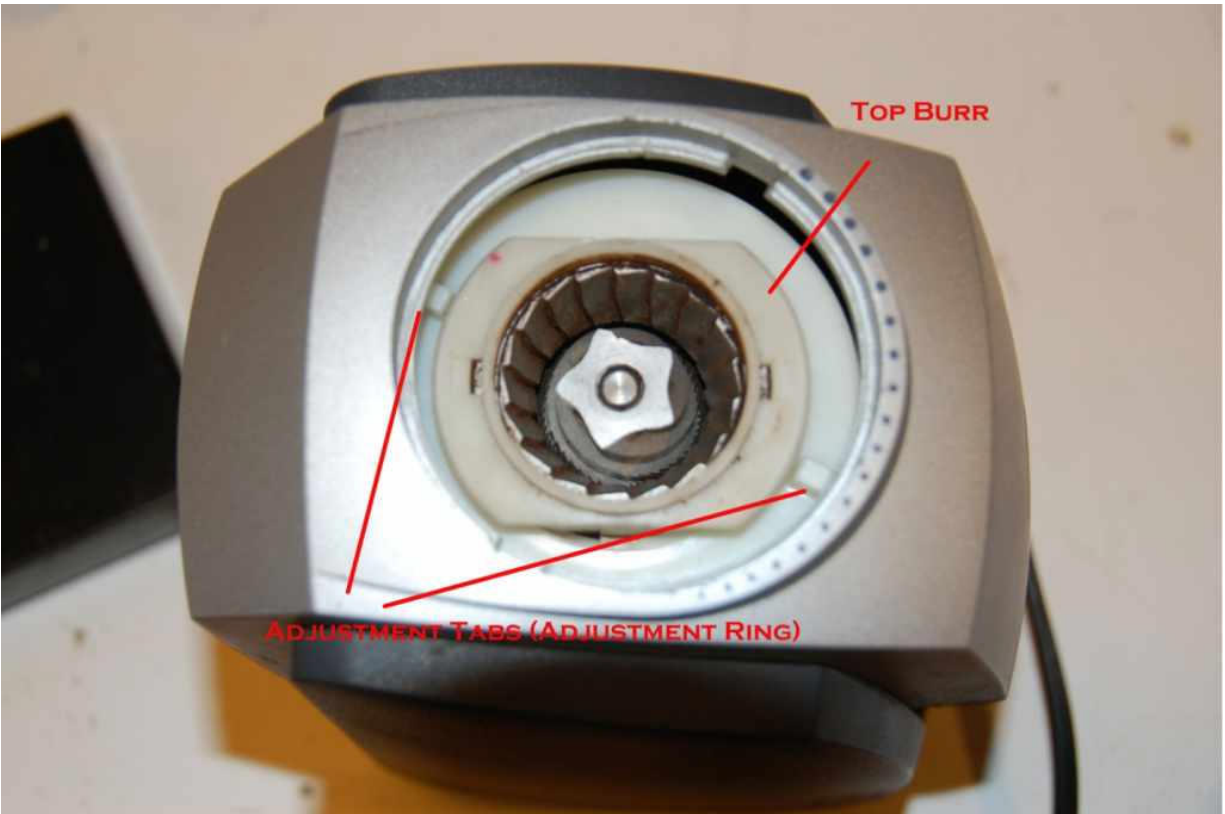
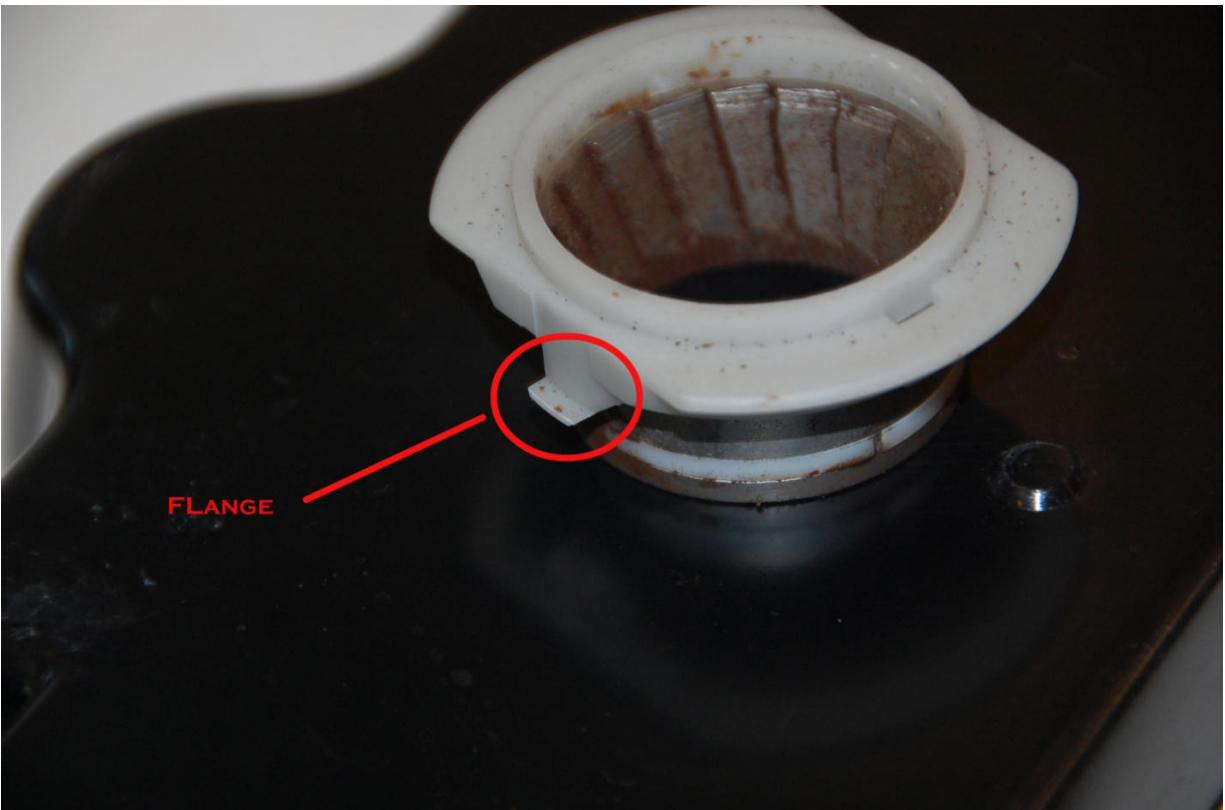


Solis Maestro Top Burr Flange

Unplug your grinder and remove the bean hopper. The inside of your grinder should look like this:

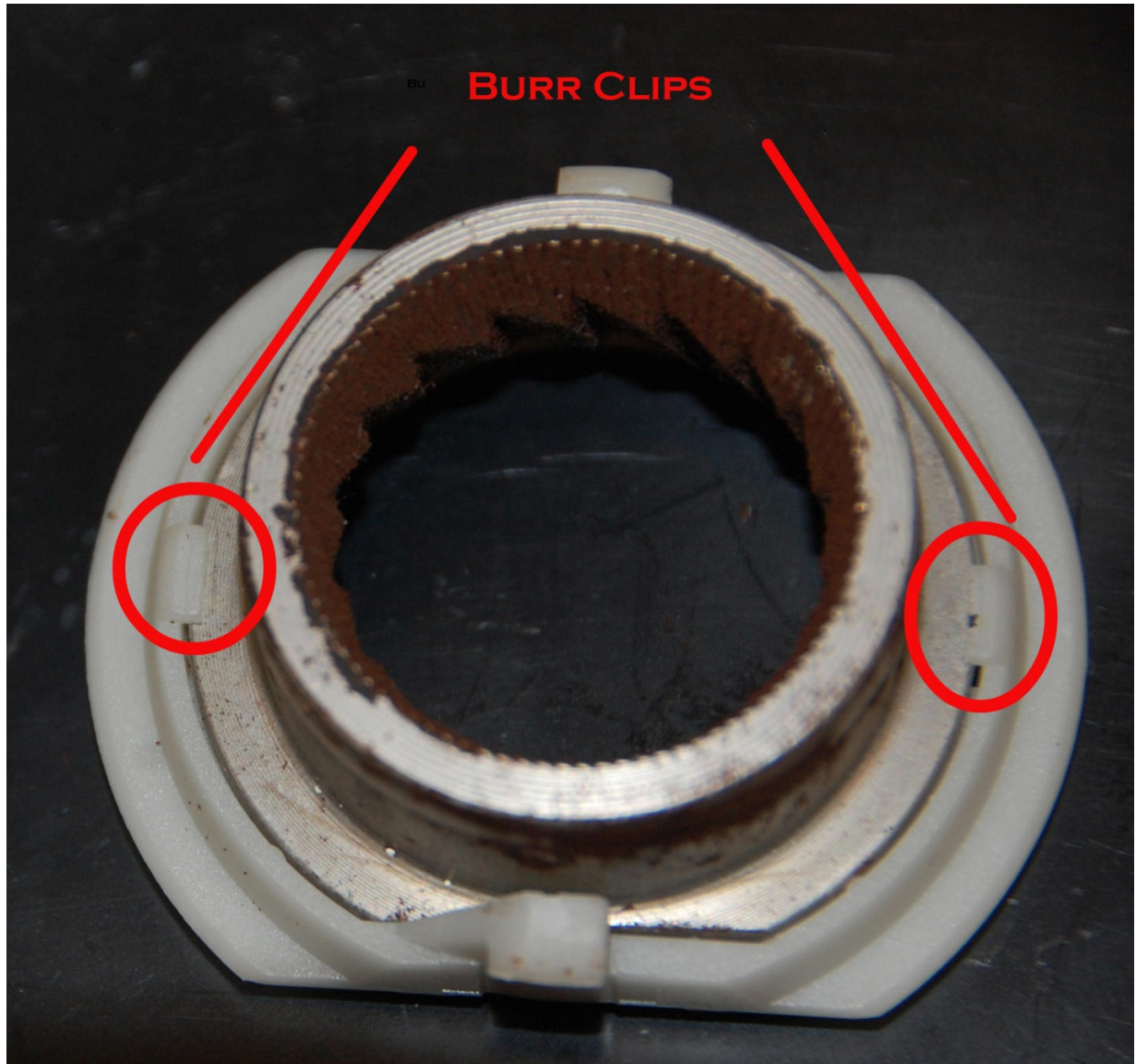


The flanges you are looking for are outlined in the photo below.



There should be two flanges, one on each side. If one or both flanges are missing, you'll need to replace the burr holder to get your grinder back to being able to adjust the grind again. You can order a replacement holder here: <http://www.baratza.com/cgi-bin/commerce.cgi?preadd=action&key=5068>

To swap the metal burr out from the old holder to the new holder, flip the old burr upside down so that the metal part is facing upwards. Locate the two clips holding the old burr in, outlined in the photo below.



Using a small flat bladed screwdriver, pry the metal burr out of the old holder. Flip the new holder over so that the two legs are facing upwards. Slide one edge of the burr underneath the clip on the new holder. Push down on the burr on the side that isn't in place yet and the burr should snap into place. Once the burr is securely fastened, you're ready to grind again.