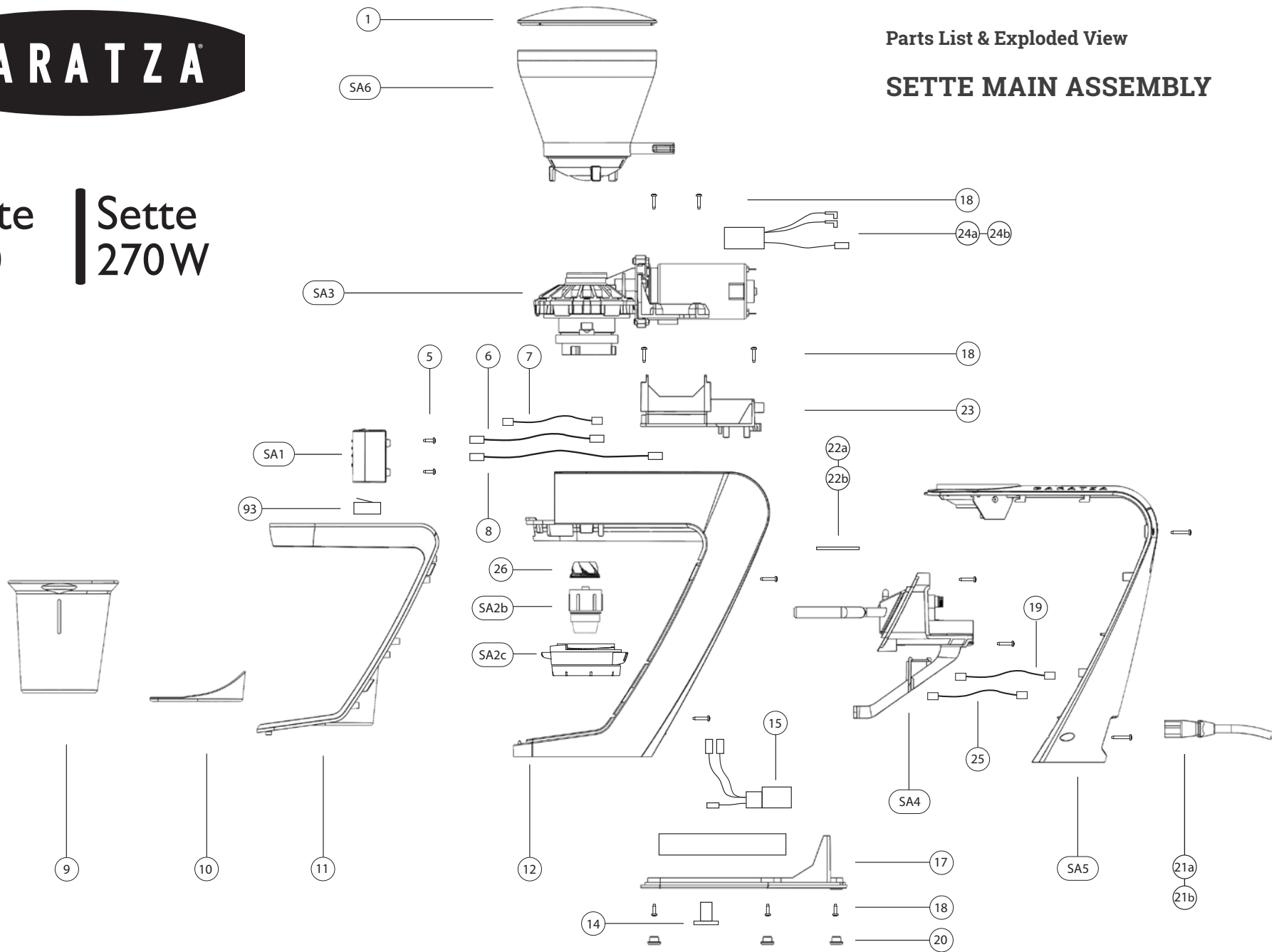




Parts List & Exploded View

SETTE MAIN ASSEMBLY

Sette 270 | Sette 270W



## SETTE 270 & 270W MAIN ASSEMBLY

Item #	Part #	Part Description	Total Used
1	1010	Sette Hopper Lid Clear	1
SA6	S012	Sette Shut Off Hopper Assembly	1
SA3a	S056**	Sette Gear Box/Motor/Ring Burr Assy (110V)	1
SA3b	S057**	Sette Gear Box/Motor/Ring Burr Assy (220V)	1
SA1a	S075**	Sette 270 Display Assy	1
SA1b	S076**	Sette 270-W Display Assy	1
5	S122	Screw PT TR10 KA20x8	4
6	S097	Jumper wire from display panel to power board black, red, blue	1
7	S098	Jumper wire from micro switch white black brown	1
8	S102	Ground wire from display to ballast	1
9	S160	Sette Grounds Bin	1
10	S161	Sette Dust Tray	1
11	S036	Front Case (Silver)	1
12	S023	Sette Chassis	1
26	S071	Sette 270 (Cone Burr )	1
SA2b	S068	Sette Burr Holder Assy	1
SA2c	S069**	Sette 270 270W Adjustment Assembly	1
14	6122	Screw Metal Ballast	1
15	S099	Power Input to Circuit Board Assy	1
SA4a	S351**	Convertible Device Holder 270	1
SA4b	S085**	Sette 270 W Convertible Device Holder & Load Cell Assy (with circuit board)	1
17	S321	Sette Base	1
18	S121	Screw PT_TR10_ 3.5*11.5	4
19	S101	Load cell to Ballast ground wire (Short) (270W only)	1

Item #	Part #	Part Description	Total Used
20	6049**	Feet	5
SA5	S035**	Top/Back Case (Black)	1
21a	S300	Standard Power Cord	1
21a	S301	Euro Power Cord (Plug F)	1
21a	S302	Power Cord UK (G)	1
21a	S303	Power Cord (I)	1
21a	S304	Power Cord Japan (JET)	1
21a	S305	Power Cord (L)	1
21a	S306	Power Cord (M)	1
21a	S307	Power Cord (N)	1
22a	S060**	Sette Power Board (110)	1
22b	S061**	Sette Power Board (230)	1
23	S091	Sette Power Board Mounting Bracket (Not For Sale)	1
24a	S028**	Sette Cable/Capacitor Assy Motor to PCB (110)	1
24b	S029**	Sette Cable/ Capacitor Assy Motor to PCB (230)	1
25	S100**	Jumper wire Load cell PCB to Power Board	1
93	S032	Micro Switch Long Foot (Not Show)	1
NS	S063**	Fuse 110 Volt (Not Shown)	1
NS	S064**	Fuse 230 Volt (Not Shown)	1
NS	S548	Adjustable Porta Filter Hook (Not shown)	1
NS	S570	Arm Sleeve Right (Not Shown)	1
NS	S571	Arm Sleeve Left (Not Shown)	1

\*\* Frequently needed service parts

\* Occasionally needed service parts