

Preciso Recalibration

Tools needed: #2 Flathead screwdriver, #0 Phillips screwdriver

All clock positions are in reference to the front of the grinder being 6 o'clock

Unplug the grinder

Remove the hopper by rotating counterclockwise until it lifts up and off the grinder

Remove the silicone seal

Remove the upper ring burr

Remove the grounds bin

Remove the micro adjust knob. Accomplish this by putting the knob at six o'clock, push down on the adjustment ring at six o'clock with two fingers, and simultaneously stick the head of the flathead screwdriver in horizontally as pictured and pry upwards



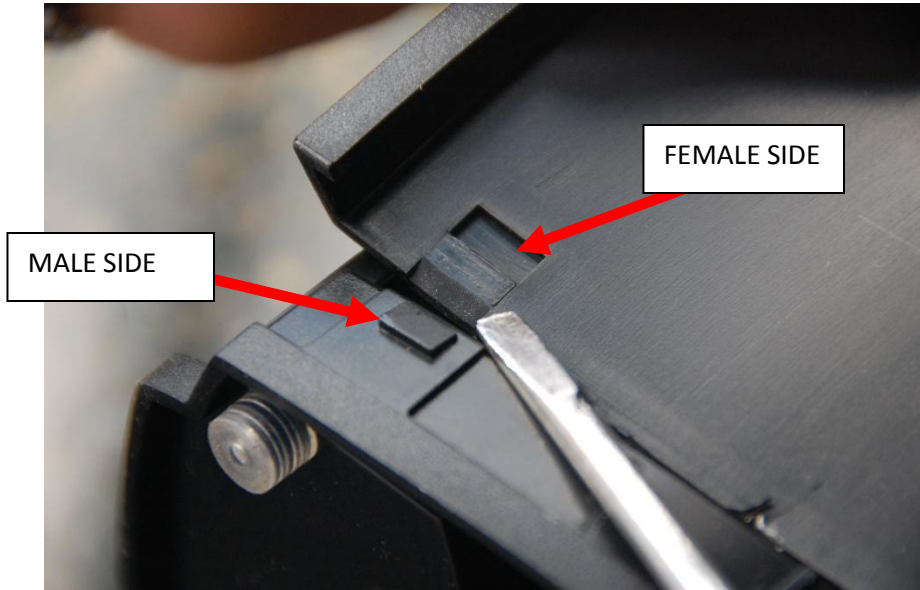
Remove the timer knob by pulling it straight off the grinder



Put the grinder on its side, with the timer knob hole facing upwards

Removing the case is accomplished by separating the four case clips- two on each side of the grinder (example below)

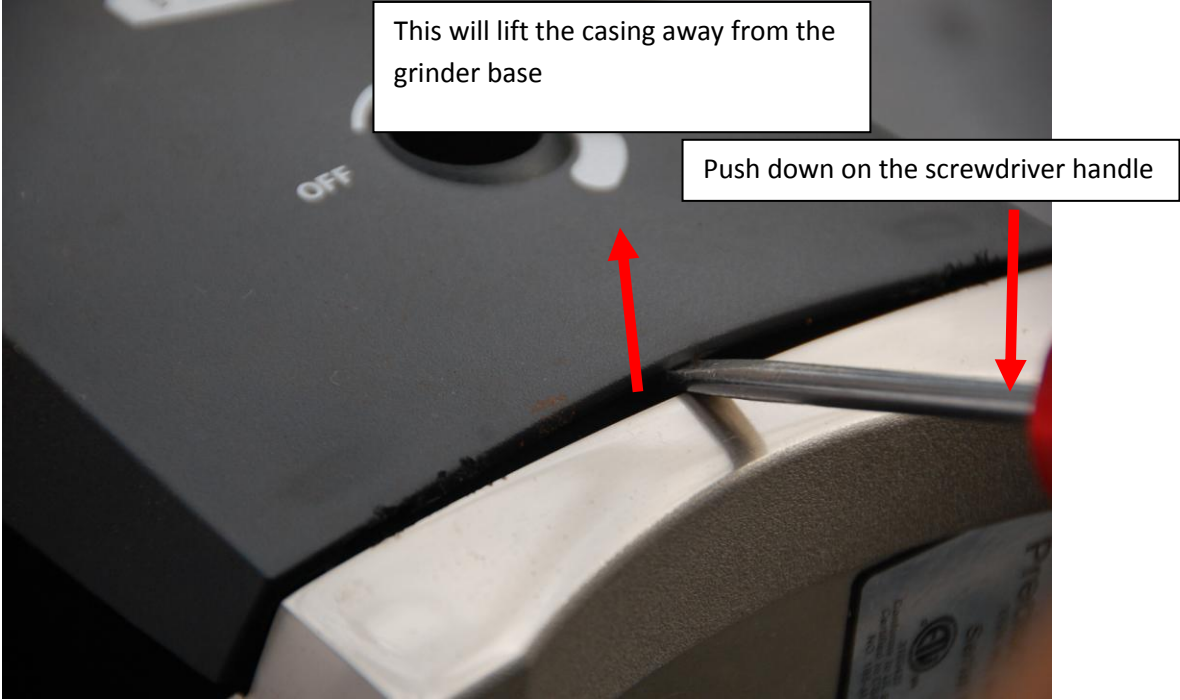
The grinder base has the male side (below the screwdriver) and the case has the female side.



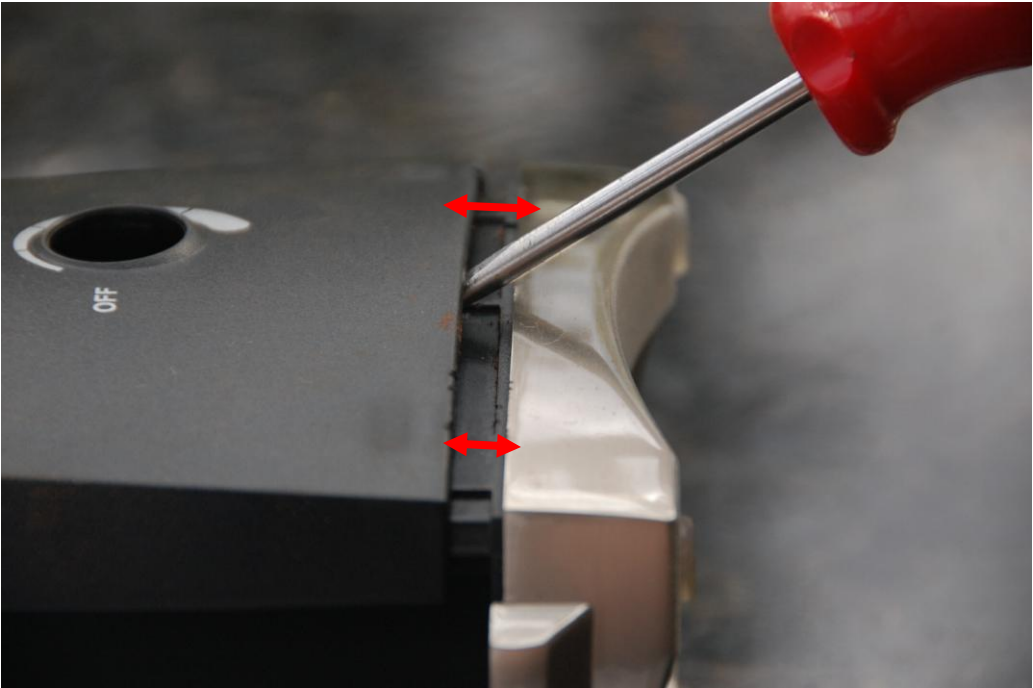
Start by wedging a flat blade screwdriver in vertically



Rock it back to catch the lip of the casing.



Push the screwdriver 1/2 inch deeper into the crack, and then pivot the screwdriver mildly upwards to force the case shell away from the base, while simultaneously using your free hand to pull up on the casing where the hopper usually sets. These two motions will free the clips, leaving a 1/2" to 1" space between the shell and the base.



Next, carefully roll the unit over to the other side without letting the 1st side clip back together and repeat this procedure. After you get the second side freed, the entire shell of the case will slide up and off the grinder.

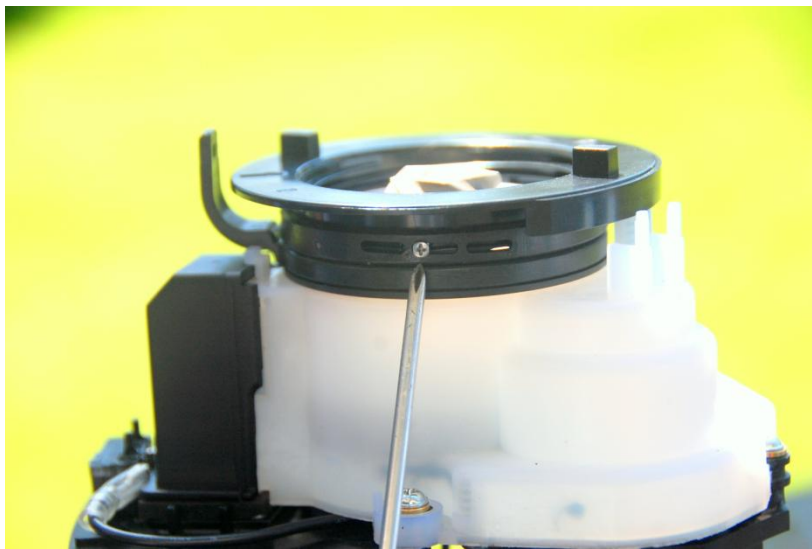


We took off the micro switch (black with two wires going to it, right by the adjustment ring) to get better pictures. It is not necessary to remove.

Look at the black ring. Notice the 3 'windows' at about 2 o'clock-go ahead and rotate the adjustment ring clockwise so the windows are more accessible. **KEEP THE MICRO ADJUSTMENT LEVER AT SIX O'CLOCK AT ALL TIMES.** There will be a small silver set screw in one of the windows. Remove the screw; it will be in one of two holes. Hold the adjustment ring steady while rotating the windows to change your calibration. Moving the windows to the left makes the unit coarser; moving them to the right makes the unit finer. **DO NOT** rotate the windows to the right past the right screw hole.



ABOVE- Calibration set as coarse as possible



ABOVE- Calibration set in the middle (neutral)



ABOVE- Calibration set as fine as possible

If the screw hole pictured above (finest calibration) went any further to the right, the black adjustment ring will separate from the white gearbox. If this happens, please take a look at our [Preciso adjustment ring guide](#) to snap it back into place.

After calibration is complete, re assemble. Make sure that the micro adjustment lever fits smoothly into its' slot when putting back on the case. Enjoy.